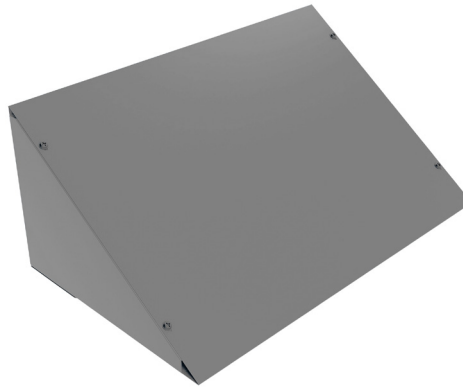


# SLIDE RACK TOPPERS



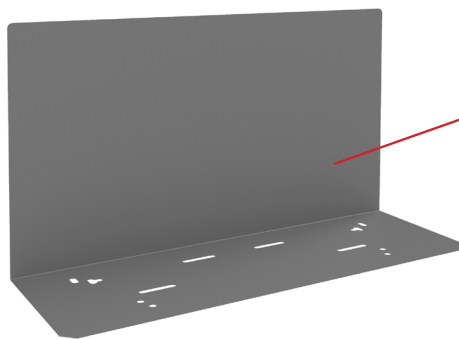
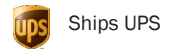
**Model 378-95**

## Rack Topper

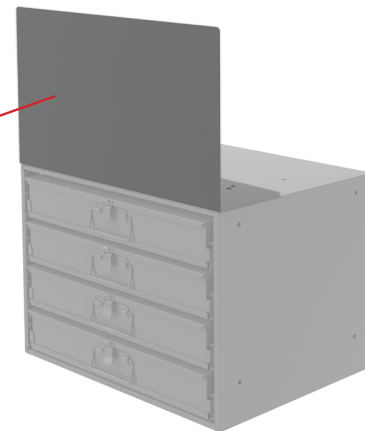
- Prime cold-rolled steel
- Fits 303B & 321B
- Keeps top of bin free of clutter
- Durable, gray, powder coat finish

Model	Overall Dim: WxDxH (In.)	Fits Models	Carton Pk.	Ship Wt. (lbs.)
378-95	20-1/4 x 12 x 8-1/2	303B and 321B	1	13

FOB CT



REAR SIDE VIEW



\*DRAWER CABINET NOT INCLUDED

**Model 376-95**

## 20-1/4" Wide Slide Rack Topper

- All-welded 18 gauge steel construction
- Holes in bottom allow secure stacking
- Topper for bin and drawer cabinets that are also 20-1/4" wide
- Ships fully assembled
- Durable, gray, powder coat finish

Model	Overall Dim: WxDxH (in)	Carton Pk.	Ship Wt. (lbs.)
376-95	20-1/4 x 6-7/8 x 12	1	5

FOB CT

