

LARGE BEARING SLIDE RACKS & BASES



Model
303B-15.75-95



Model
305B-95



Model
309B-95



Model
321B-95



Model
321B-95-DR



Model
304-95

Heavy Duty Bearing Slide Rack (Holds Large Compartment Boxes)

- Sturdy construction using prime cold-rolled steel
- Each cradle holds up to 75 Lbs.
- Solid cradle extends beyond the opening of the unit when in the open position reducing the chance of drawer covers closing when not intended
- Slides can be replaced
- Positive closure feature keeps trays from sliding out unintentionally
- Punched holes for easy installation of locking hinge (locking hinge not included)
- -DR model includes door and lock with 2 keys
- Base is available as accessory
- Durable, textured, gray powder coat finish

| Model | Overall Dim: WxDxH (In.) | Compartments | Carton Pack | Ship Wt. (Lbs.) |
|-----------------------|----------------------------|---|-------------|-----------------|
| 303-95 | 20 x 15-5/8 x 15 | 4 | 1 | 30 |
| 303B-15.75-95 | 20-5/16 x 15-7/8 x 15 | 4 | 1 | 40 |
| 309B-95 | 20-3/16 x 12-5/8 x 8-1/8 | 2 | 40* | 20 |
| 310B-95 | 20-5/16 x 12-5/8 x 14-7/8 | 4 | 1 | 34 |
| 305B-95 | 20-1/2 X 12-1/2 x 21 | 5 | 1 | 48 |
| 321B-95 | 20-5/16 x 15-7/8 x 21-7/8 | 6 | 1 | 57 |
| 321B-95-DR | 20-5/16 x 15-7/8 x 21-7/8 | 6 with locking door | 1 | 62 |
| Optional Bases | | | | |
| 304-95 | 20-9/16 x 16-1/8 x 15 | For Models 302B-15.75, 303B-15.75, 321B | 1 | 16 |
| 304-95-5.75/LEG | 20-9/16 x 16-1/8 x 5-11/16 | For Models 302B-15.75, 303B-15.75, 321B | 1 | 12 |
| 311-95 | 20-3/4 x 12-3/4 x 15 | For Models 309B, 310B | 1 | 15 |
| 311B/305B-95 | 20-3/4 x 12-3/4 x 15 | Only for Model 305B-95 | 1 | 15 |



Ships UPS

* Minimum order quantity

COMPARTMENT BOXES FOR LARGE RACKS



**Model
102-95**



**Model
107-95**



**Model
109-95**



**Model
111-95**



**Model
119-95**



**Model
113-95**



**Model
115-95**



**Model
117-95**



**Model
125-95**



**Model
131-95**

Large Compartment Boxes

- Prime cold rolled steel outer shell
- Compartments have scooped bottoms to make part removal easy
- Full piano hinge on cover provides rigidity
- Handle allows for easy transport
- Positive pull-down catch keeps cover tightly closed to prevent part migration
- Racks, pouches and cover labels are available as accessories
- Durable gray powder coat finish

| Model | Overall Dim: WxDxH (In.) | Compartments | Carton Pack | Ship Wt. (Lbs.) |
|-----------------|----------------------------------|-------------------------|-------------|-----------------|
| 102-95 | 18 x 12 x 3 | 24 | 4 | 32 |
| 107-95 | 18 x 12 x 3 | 32 | 4 | 32 |
| 109-95 | 18 x 12 x 3 | 21 | 4 | 32 |
| 111-95 | 18 x 12 x 3 | 20 | 4 | 32 |
| 113-95 | 18 x 12 x 3 | 16 | 4 | 32 |
| 115-95 | 18 x 12 x 3 | 12 | 4 | 32 |
| 117-95 | 18 x 12 x 3 | 6 vertical | 4 | 32 |
| 125-95 | 18 x 12 x 3 | 6 horizontal | 4 | 32 |
| 099-95 | 18 x 12 x 3 | Variable/Adjustable | 4 | 32 |
| 097-95 | Dividers for 099-95 (straight) | | Bag of 12 | 1 |
| 119-95 | 18 x 12 x 3 | Variable/Adjustable | 32 | 4 |
| 120-95 | Scooped dividers for 119-95 | | 1 | Bag of 9 |
| 131-95 | 18 x 12 x 3 | Adjustable | 4 | 32 |
| 132-95-EXL-H/DV | Dividers for 131-95 (horizontal) | | 1 | 1 |
| 133-95-EXL-V/DV | Dividers for 131-95 (vertical) | | 1 | 1 |
| 123-95 | 18 x 12 x 3 | Large Empty Metal Shell | 4 | 32 |

FOB CT



Ships UPS

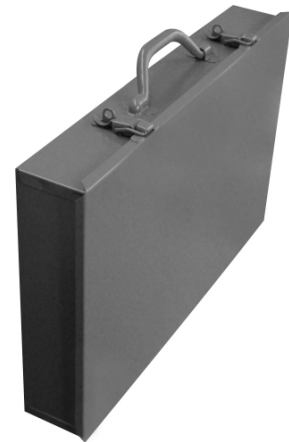
COMPARTMENT BOXES WITH HEAVY DUTY HANDLE



Model 102PC227-95



Model 119PC227-95



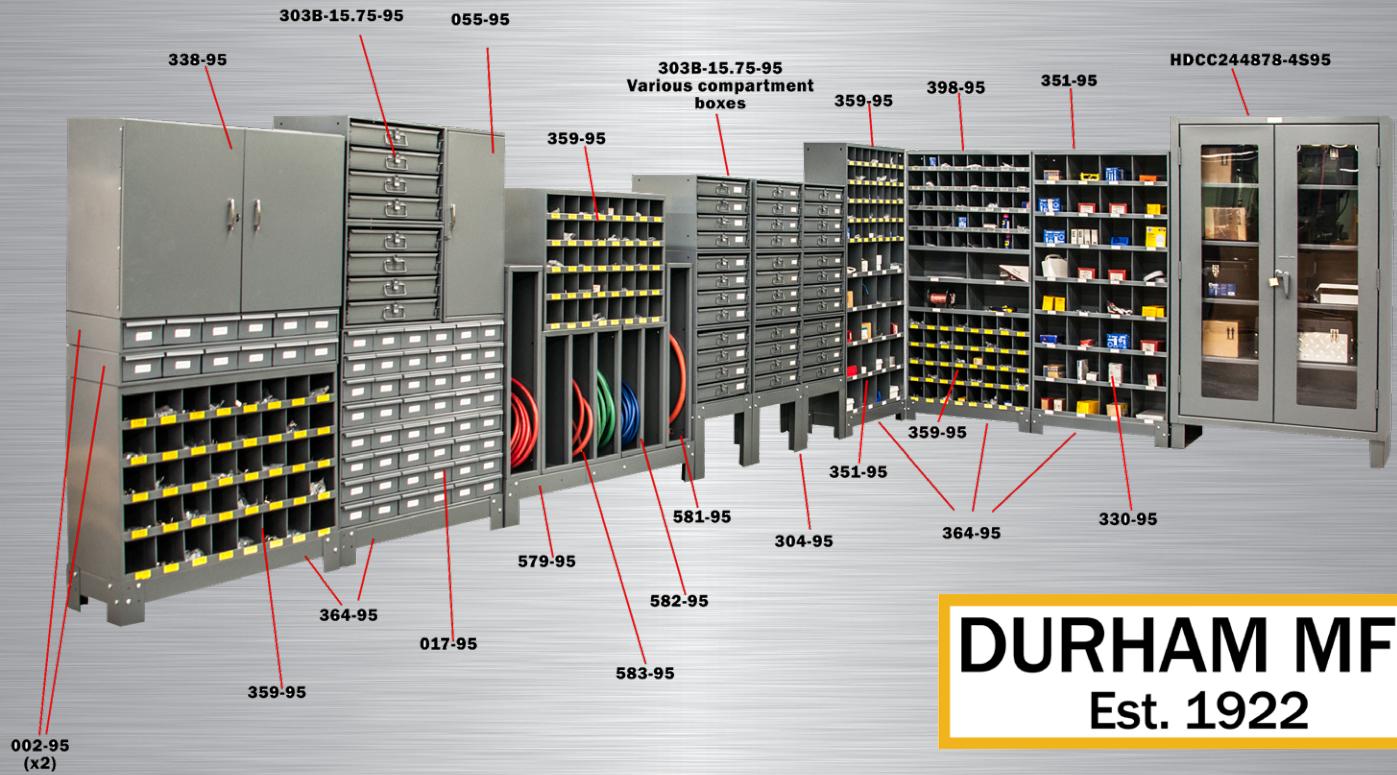
Scoop Box Style & Heavy Duty Handle

- Prime cold-rolled steel outer shell
- Compartments have scooped bottoms to make part removal easy
- Full piano hinge on cover provides rigidity
- Comfort Grip handle allows for easy transport
- Positive pull-down lock-able catches keeps cover tightly closed to prevent part migration
- Racks, pouches and cover labels are available as accessories
- Gray, gloss, powder coat finish

| Model | Overall Dim: WxDxH (In.) | Compartments | Carton Pack | Ship Wt. (Lbs.) |
|-------------|-----------------------------|---|-------------|-----------------|
| 102PC227-95 | 17-15/16 x 11-7/8 x 2-15/16 | (20) 2-11/16 x 2-7/8 (4) 3-13/16 x 2-7/8 | 4 | 32 |
| 119PC227-95 | 17-15/16 x 11-7/8 x 2-15/16 | Variable/Adjustable (4) 4-5/16 x 11-7/16 | 4 | 32 |



Ships UPS



DURHAM MFG®
Est. 1922

Compartment Boxes and Racks



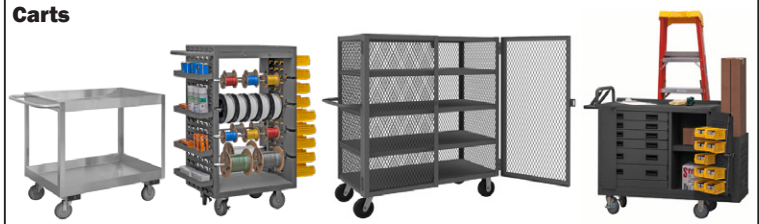
Safety Storage



Cabinets



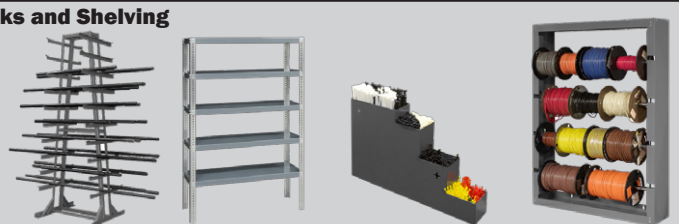
Carts



Small Parts Storage



Racks and Shelving



Workbenches and Workstations



Jobsite Storage



First Aid



Document Storage

