

Rotabin® Revolving Shelves

DURHAM MFG®
Est. 1922



Rotabin® Revolving Shelves - 17", 28", 34", 44" & 58" Diameter

17" Rotabin® Revolving Shelves and accessories	4	44" Rotabin® Revolving Shelves	8
28" Rotabin® Revolving Shelves and accessories	5	58" Rotabin® Revolving	8
34" Rotabin® Revolving Shelves and accessories	6 - 7	Merchandising Rotabin®	8

Save Time • Save Space • Save Money

ROTABIN® REVOLVING SHELVES

SAVE SPACE, SAVE TIME, SAVE MONEY

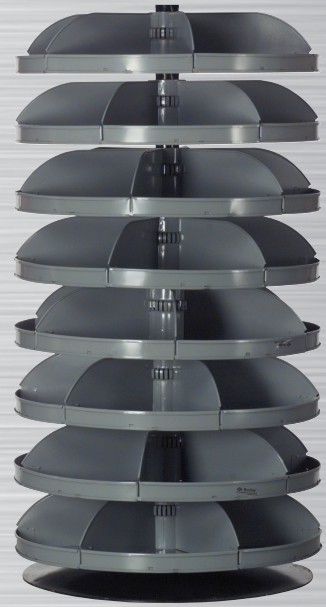
Over 20 Different Size Configurations



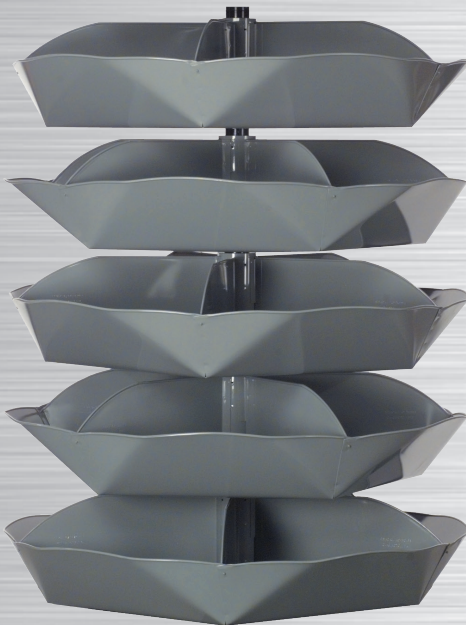
17" Diameter
60 Lbs. capacity per shelf
(weight evenly distributed)



28" Diameter
500 Lbs. capacity per shelf
(weight evenly distributed)



34" Diameter
500 Lbs. capacity per shelf
(weight evenly distributed)



44" Diameter
625 Lbs. capacity per shelf
(weight evenly distributed)



58" Diameter
2000 Lbs. capacity per shelf
(weight evenly distributed)

Save Time • Save Space • Save Money

ROTABIN®

17" REVOLVING SHELVES



**Model
1104-95**



**Model
1106-95**



**Model
1110-95**

4, 6, or 10 Shelves, 17" Rotabins®

- All steel construction
- Fits in less than 3 sq. ft.
- 4 fixed dividers per shelf form 13"W x 7-1/2"D x 3-3/8"H permanent compartments
- Optional dividers allow the creation of up to 16 compartments per shelf
- Ideal for use on work benches
- Revolving shelves make accessing parts easy
- Each shelf rotates independently on heavy duty ball bearings
- Shelf capacity of 60 Lbs. (evenly distributed)
- Easy assembly using hardware provided
- Durable, gray, powder coat finish

Model	Diameter (In.)	Height (In.)	Shelves	Total Cap. (Lbs.)	Carton	Ship Wt. (Lbs.)
1104-95	17	17-5/8	4	240	1	21
1106-95	17	25-7/8	6	360	1	29
1110-95	17	41-7/8	10	600	1	44



Ships UPS

ACCESSORIES

FOR 17" REVOLVING SHELF ROTABINS®

Steel Divider for 17" Rotabin®

- Can be placed on 3-3/8" centers to create additional compartments
- Flanged and punched for easy bolting to shelves
- Easy to install using hardware provided
- Durable, gray, powder coat finish



**Model
1141-95**

Model	Description	Dimensions LxW (In.)	Carton Pack	Ship Wt. (Lbs.)
1141-95-IND	Additional Steel Divider	7-3/8 x 3-1/16	1	1



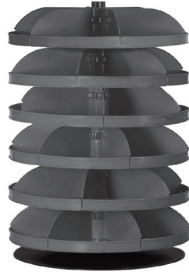
Ships UPS

ROTABINS®

28" REVOLVING SHELVES



**Model
1205-95**



**Model
1206-95**



**Model
1207-95**



**Model
1208-95**

5, 6, 7, 8, 9 or 10 Shelves, 28" Rotabins®

- Sturdy all steel construction
- Shelf capacity of 500 Lbs. (evenly distributed)
- (6) fixed dividers per shelf form (30) 14-1/2"W x 12"D x 5-3/4"H permanent compartments
- Optional dividers can be inserted to create up to 24 compartments per shelf
- 1-5/8"H bin fronts provide space for pressure sensitive labels
- Unit fits in otherwise unusable spaces including corners and at the ends of aisles
- Revolving shelves make accessing parts easy
- Each shelf rotates independently on heavy duty ball bearings
- Assembles easily using hardware provided
- Durable, gray, powder coat finish

Model	Diameter (In.)	Height (In.)	Shelves	Total Cap. (Lbs.)	Carton	Ship Wt. (Lbs.)
1205-95	28	34-1/8	5	2,500	7	138
1206-95	28	40-3/8	6	3,000	8	155
1207-95	28	46-5/8	7	3,500	9	167
1208-95	28	52-7/8	8	4,000	10	183
1209-95	28	59-1/8	9	4,500	11	199
1210-95	28	65-23/32	10	5,000	12	215

ACCESSORIES

FOR 28" REVOLVING SHELF ROTABINS®

Steel 28" Rotabin® Divider

- Sturdy all steel construction
- Bolt easily into place on 1" centers using hardware provided
- Allow the creation of up to 24 compartments per 28" diameter shelf
- Durable, gray, powder coat finish



Model	Description	Dimensions - LxW (In.)	Carton Pack	Ship Wt. (Lbs.)
1241-95-IND	Additional Steel Divider	12-5/16 x 5-9/16	1	1



Ships UPS

**Model
1241-95-IND**

ROTABINS®

34" REVOLVING SHELVES



**Model
1304-95**



**Model
1305-95**



**Model
1306-95**



**Model
1308-95**

5 - 10 Shelves, 34" Rotabins®

- Sturdy all steel construction
- Shelf capacity of 500 Lbs. (Evenly distributed)
- (5) fixed dividers per shelf form (20) 21"W x 15"D x 7"H permanent compartments
- Optional dividers can be inserted on 1" centers
- Optional plastic pans are available for transporting parts; 3 pans fit into each permanent compartment
- 2-3/8" high bin fronts provide space for pressure sensitive labels
- Unit fits in otherwise unusable spaces including corners and at the ends of aisles
- Revolving shelves make accessing parts easy; each shelf rotates independently on heavy duty ball bearings
- Assembles easily using hardware provided
- Durable, gray, powder coat finish

Model	Diameter (In.)	Height (In.)	Shelves	Total Cap. (Lbs.)	Cartons	Ship Wt. (Lbs.)
1304-95	34	34-1/4	4	2000	6	155
1305-95	34	42	5	2500	7	181
1306-95	34	49-3/4	6	3000	8	206
1307-95	34	57-1/2	7	3500	9	232
1308-95	34	65-1/2	8	4000	10	257

For additional information visit our website:

www.durhammfg.com

or

Contact us at: info@durhammfg.com

ROTABINS®

ACCESSORIES FOR 34" UNITS

Dividers for 34" Rotabins® with 2-3/8"H Bin Fronts

- Sturdy all steel construction
- Bolt easily into place on 1" centers using hardware provided
- Durable, gray, powder coat finish

Model	Description	Dimensions - LxH (In.)	Carton Pack	Ship Wt. (Lbs.)
1341-95-IND	Additional Steel Divider	15 x 6-9/16	1	1

FOB CT



Ships UPS



**Model
1341-95-IND**

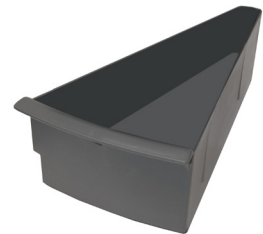
Rotabin® Pans for 34" Rotabins®

- Durable molded plastic design
- Makes it easy to transport parts and store different items in the same shelf compartment
- Up to 3 pans fit in each fixed shelf compartment
- Sold in packages of 15
- Color: Gray

Model	Description	Carton Pack	Ship Wt. (Lbs.)
15007-95	Grey Rotabin® Pan	15	17



Ships UPS



**Model
15007-95**

MULTI-SIZED REVOLVING SHELVES

Multi-Sized Merchandising Rotabin®

- Sturdy all steel construction
- Total capacity of 2,650 Lbs. (evenly distributed)
- Each shelf rotates independently on heavy duty ball bearings
- Optional dividers are available for 28" & 34" shelves
- Total of 26 compartments
- Fits in otherwise unusable space, including corners and aisle ends
- Assembles easily using hardware provided
- Bin fronts on the 28" and 34" shelves have 1-5/8" H space for labeling and pricing
- Durable, gray, powder coat finish

Model	Dia. (In.)	Height (In.)	Shelves (In.) / capacity (Lbs.)	Cartons	Ship Wt. (Lbs.)
1700-95	44" Bottom 34" Center 28" Top	65-3/4	1-28" (6 compartments) 500 lb. Cap 3-34" (5 compartments) 500 lb. Cap 1-44" (5 compartments) 650 lb. Cap	7	185



**Model
1700-95**

Accessories for Multi-Sized Merchandising Rotabin®

Model	Description	Carton pk.	Ship Wt. (Lbs.)
15007-95	Gray Rotabin® Pan for 34" shelf	15	17
1241-95-IND	Steel Divider for 28" shelf	1	1
1341-95-IND	Steel Divider for 34" shelf	1	1



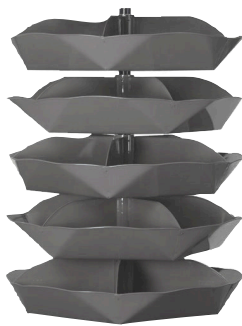
Ships UPS

ROTABINS®

44" & 58" REVOLVING SHELVES



**Model
1504-95**



**Model
1505-95**



**Model
1535-95**



**Model
1506-95**

4, 5 or 6 Shelves, 44" Rotabin®

- Sturdy all steel construction
- Shelf capacity is 625 Lbs. (Evenly distributed)
- Shelves are manufactured from one piece of steel with dividers welded into place
- 5 permanent compartments per shelf; 20 total compartments
- Fits in otherwise unusable spaces including corners and at the ends of aisles
- Revolving shelves with rounded bottoms make accessing parts easy
- Each shelf rotates independently on heavy duty ball bearings
- Assembles easily using hardware provided
- Durable, gray, powder coat finish

Model	Diameter (In.)	Height (In.)	Shelves	Compartments per shelf	Total Cap. (Lbs.)	Carton	Ship Wt. (Lbs.)
1504-95	44	46-1/2	4	5	2,500	4	194
1505-95	44	57-1/2	5	5	3,125	7	228
1535-95	44	57-1/2	5	10	3,125	7	268
1506-95	44	69-1/2	6	5	3,750	8	263
1536-95	44	69-1/2	6	10	3,750	8	338



**Model
1605-95**

5 Shelf 58" Rotabin® (10,000 Lbs. overall capacity)

- Sturdy all steel construction with 10,000 Lbs. overall capacity
- Shelf capacity is 2,000 Lbs. (evenly distributed)
- Shelves are manufactured from one piece of steel with dividers welded into place
- 10 permanent compartments per shelf; 50 total compartments
- Fits in otherwise unusable spaces including corners and at the ends of aisles
- Revolving shelves with rounded bottoms make accessing parts easy
- Each shelf rotates independently on Heavy duty ball bearings
- Assembles easily using hardware provided
- Durable, gray, powder coat finish

Model	Diameter (In.)	Height (In.)	Shelves	Cartons	Ship Wt. (Lbs.)
1605-95	58	66-5/16	5	6	549