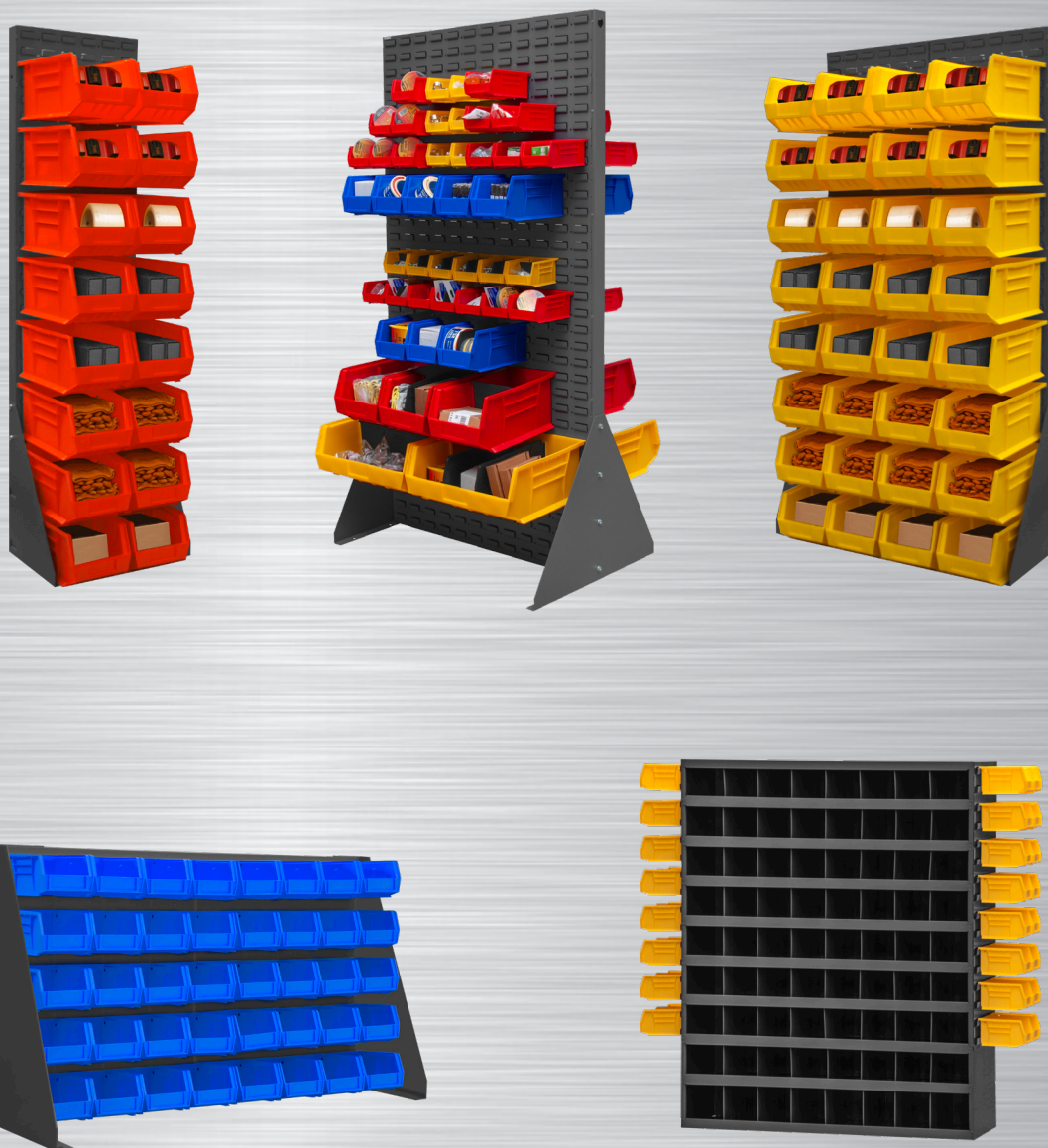


# Louvered Panel Systems

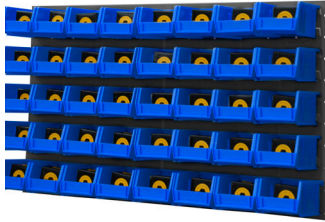
**DURHAM MFG<sup>®</sup>**  
Est. 1922



Bin, Louvered Panels Wall & Rack Systems		
72 Opening Bin with Side Louvered Panels		3
Wall Mountable Louvered Panel		3
Free Standing Louvered Panel Racks		4

# LOUVERED PANELS

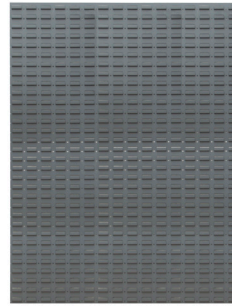
## WALL MOUNTABLE



**Model**  
**LPW-34.5X20-95**



**Model**  
**LPW-17.25X20-95**



**Model**  
**LPW-46X64-95**



**Model**  
**LPW-34.5X20-95**

### Wall Mountable Louvered Panel (Hook-On-Bins® sold separately\*)

- Constructed of 16 gauge steel
- Louvers accommodate all sizes of Hook-On-Bins® (Bins are sold separately\*)
- Tray shelves can be purchased as an accessory see page 9
- 1/4" holes for wall mounting - hardware not included
- Durable, textured, powder coat finish

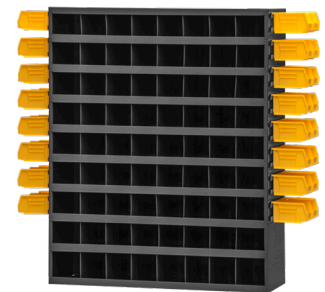
Model	Dimensions WxH (In.)	Hook-On-Bins® (Quantity to fit Louvered Panel)					Capacity (Lbs.)	Ship Wt. (Lbs.)
		PB30210	PB30220	PB30230	PB30240	PB30250		
LPW-17.25X20-95	17-1/4 x 20	16	16	9	4	2	175	10
LPW-17.25X64-95	17-1/4 x 64	64	64	30	16	8	500	26
LPW-34.5X12-95	34-1/2 x 12	24	24	12	4	2	175	10
LPW-34.5X20-95	34-1/2 x 20	40	40	18	8	4	175	16
LPW-34.5X64-95	34-1/2 x 64	128	128	60	32	16	1000	43
LPW-46X20-95	46 x 20	40	40	24	12	4	250	22
LPW-46X64-95	46 x 64	176	176	84	40	16	1000	57



Ships UPS

### 72 Opening Bin with Side Louvered Panels (Hook-On-Bins® sold separately\*)

- All-welded, prime cold-rolled steel
- Fully hemmed 1-1/8" bin fronts to hold labels and retain parts
- Roll-formed sides for increased strength and stability
- Ribbed and hemmed dividers provide added strength
- Sloped shelves for easy removal of contents
- Tray shelves can be purchased as an accessory (see page 9)
- Louvered strips welded to the side accommodate tray shelves (see page 9) or Hook-On-Bins®
- Modular with most 12" deep bins and drawer cabinets; mounting holes are located on both the top and bottom
- Optional doors, base and bin labels available
- Ships fully assembled
- Durable, powder coat finish



**Model**  
**363LP-95**

Model	Dimensions WxDxH (In.)	Hook-On-Bins® (Quantity to fit Louvered Panel)					Capacity (Lbs.)	Ship Wt. (Lbs.)
		PB30210	PB30220	PB30230	PB30240	PB30250		
363LP-95	33-13/16 x 11-15/16 x 42	48	48	24	8	N/A	500	83
<b>BASE</b>								
364-95	34-1/14 x 12-1/8 x 5-3/4	-					-	14

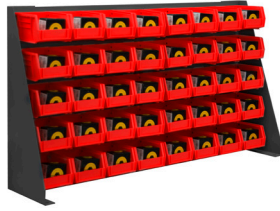
\*Hook-On-Bins® are only sold in full carton quantities

# LOUVERED PANELS

## FREE STANDING



**Model**  
**LPRSS-17.25X68-95**



**Model**  
**LPRSS-34.5X20-95**



**Model**  
**LPRDS-34.5X68-95**  
\*\*2 sided model



**Model**  
**LPRSS-34.5X68-95**

### Free Standing Louvered Panel Racks (Hook-On-Bins® sold separately\*)

- Constructed of 16 gauge steel
- LPRDS is a double sided unit
- Louvers accommodate all sizes of Hook-On-Bins® (Bins are sold separately\*)
- Base mounts easily with hardware provided
- Tray shelves can be purchased as an accessory
- 1/4" holes for wall mounting
- Durable, textured, powder coat finish

Model	Dimensions WxH (In.)	Hook-On-Bin® (Quantity to fit Louvered Panel)					Capacity (Lbs.)	Ship Wt. (Lbs.)	Shipping
		PB30210	PB30220	PB30230	PB30240	PB30250			
LPRSS-17.25X20-95	17-9/16 x 8 x 20-1/8	16	16	9	4	2	140	24 Lbs.	UPS-able
LPRSS-17.25X68-95	17-13/16 x 13-1/2 x 68-1/2	64	64	33	16	8	125	52 Lbs.	Truck
LPRSS-34.5X12-95	35 x 9 x 13	24	24	12	4	2	150	23 Lbs.	UPS-able
LPRSS-34.5X20-95	35 x 9 x 24	40	40	18	8	4	500	27 Lbs.	UPS-able
LPRSS-34.5X68-95	35-1/2 x 13-1/2 x 68-1/2	136	136	66	32	16	1000	90 Lbs.	Truck
LPRDS-34.5X68-95	35-1/2 x 24-5/8 x 68-1/2	272	272	132	64	32	2000	135 Lbs.	Truck

\*Hook-On-Bins® are only sold in full carton quantities

## ACCESSORIES

### Tray Shelves

- Constructed of steel
- Hooks easily onto louvers with no tools required
- Unit comes fully assembled
- Durable, textured, powder coat finish

Model	Overall Dim: WxDxH (In.)	Quantity per pack	Ship Wt. (Lbs.)
DSH-124-95	11-1/2 x 3-3/4 x 1-1/2	6	9 Lbs.
DSH-184-95	17-1/4 x 3-3/4 x 1-1/2	6	13 Lbs.



Ships UPS



**Model**  
**DSH-124-95**



**Model**  
**DSH-184-95**