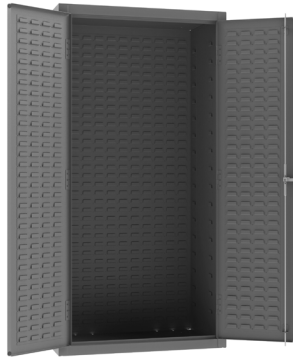
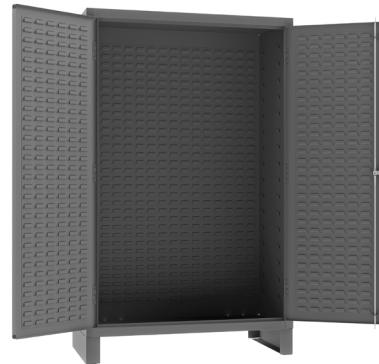


14 GAUGE CUSTOMIZABLE CABINETS



Model 3501-BDLP-95



Model JC-482478-BDLP-95



Model 3602-BLP-95



Model SSC-602484-BDLP-95

Customizable Cabinet with No Bins or Shelves (Flush Door Style)

- All-welded, 14 gauge, steel construction
- 3-point locking system with chrome keyed handle and 5/16" diameter lock rods. SSC units have a chrome handle with a pad-lockable hasp
- Full height, formed and recessed doors with heavy duty, leaf hinges to prevent sagging and warping
- Double doors open at 180° for full access to product
- Fully welded louvered panels reinforce doors and hold Hook-On-Bin® (accessory)
- Hook-On-Bins® installed easily with no tools required
- Cabinets ship fully assembled
- Optional Shelves or Hook-On-Bins® available as accessory
- Durable, textured, gray, powder coat finish

Model	Overall Dim: WxDxH (In.)	Shelf capacity (Lbs.)	Shelves	Ship Wt. (Lbs.)
Flush Doors - Louvered Panel on Back and Doors				
3501-BDLP-95	36 x 24 x 72	-	Empty Cabinet	320
3602-BLP-95	36 x 18 x 72	-	Empty Cabinet	282
FDC-SH-3618-95	35-3/4 x 16-3/8	1250	Extra Shelf	19
Flush Doors - Louvered Panel on Back and Doors - 6"H base/legs which provide access for forklifts; pre-punched holes for lagging to the floor				
JC-482478-BDLP-95	48 x 24 x 78	-	Empty Cabinet	407
FDC-SH-4818-95	47-3/4 x 16-3/8	750	Extra Shelf	25
SSC-602484-BDLP-95	60 x 24 x 84	-	Empty Cabinet	529
FDC-SH-6018-95	59-3/4 x 16-3/8	500	Extra Shelf	33
4" Deep Box Style Door - Main cabinet is 20"D; box style 4"D doors makes full cabinet depth 24"				
DC-482472-BDLP-95	48 x 24 x 72	-	Empty Cabinet	428
SJC-BDLP-95	48 x 24 x 84	-	Empty Cabinet	469
FDC-SH-4818-95	47-3/4 x 16-3/8	750	Extra Shelf	25