

ABRASIVES STORAGE



**Model
557-95**

Cut-off Wheel Dispensers

- 18 Gauge, sturdy, formed steel
- Fully assembled and ready for use
- Keyhole punches allow for wall mounting
- Durable, gray, powder coat finish

Model	Overall Dim: WxDxH (In.)	Description	Ship Wt. (Lbs.)
555-95	3-1/8 x 3-1/8 x 4-1/4	3" Cut-Off Wheel Dispenser	1
556-95	4-1/8 x 4-1/8 x 4-1/4	4" Cut-Off Wheel Dispenser	1
557-95	4-11/16 x 4-11/16 x 4-1/4	4-1/2" Cut-Off Wheel Dispenser	1

FOB CT



Ships UPS



**Model
657-95**

Grinding Wheel Dispensers with Lids

- 20 Gauge, sturdy, formed steel
- Fully assembled and ready for use
- Keyhole punches allow for wall mounting
- Durable, gray, powder coat finish

Model	Overall Dim: WxDxH (In.)	Description	Ship Wt. (Lbs.)
657-95	5-1/2 x 6-1/4 x 16-1/4	4-1/2" Grinding Wheel Dispenser	5
658-95	7-3/4 x 8-9/16 x 16-1/4	7" Grinding Wheel Dispenser	6

FOB CT



Ships UPS



**Model
060A-95-WFS**

Abrasive Accessory Cabinet

- All welded, steel construction
- Locking system with keys included
- Keyhole slots in the back of the unit for wall mounting
- (1) Sandpaper rod included
- (6) Removable dividers
- Pegboard is 21" x 7-11/16" and includes 5 pegboard hooks
- Modular to our 12" deep bins and other cabinets of the same size
- Some assembly is required.
- Durable, gray, powder coat finish

Model	Overall Dim: WxDxH (In.)	Ship Wt. (Lbs.)
060A-95-WFS	33-3/4 x 11-7/8 x 23-7/8	56 lbs

FOB CT



Ships UPS



**Model
057A-95-ND**

Abrasive Cabinet with Pegboard Back

- All welded, steel construction
- Keyhole slots in the back of the unit for wall mounting
- (2) adj. shelves: 12-5/16" x 19-5/8"
- Shelves adjust on 1-7/8" increments
- Includes (10) 8" peg hooks
- Ships fully assembled
- Durable, gray, powder coat finish

Model	Overall Dim: WxDxH (In.)	Ship Wt. (Lbs.)
057A-95-ND	19-7/8 x 14-1/4 x 32-3/4	42 lbs

FOB CT



Ships UPS



**Model
289-95**

Gravity Feed Dispenser with 6 Compartments

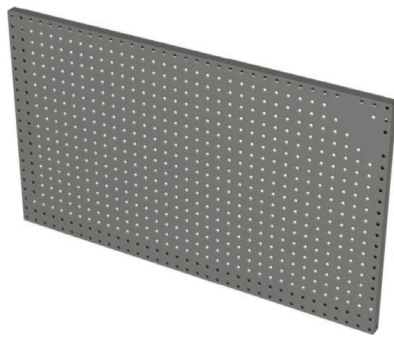
- 20 Gauge, sturdy, welded steel
- Keyhole punches allow for wall mounting
- 6 Openings: (2) 3-1/2" (4) 3-3/8"
- Holds 2" or 3" grinding discs but can be used for any small parts
- Fully assembled and ready for use
- Durable, gray, powder coat finish

Model	Overall Dim: WxDxH (In.)	Ship Wt. (Lbs.)
289-95	20-3/4 x 7-1/2 x 17-5/8	13

FOB CT



Ships UPS



**Model
915-95**

Wall Mountable Pegboard Panels

- 18 Gauge, sturdy, formed steel
- Hole punches allow for wall mounting
- Peghole size is 1/4" and are spaced 1" apart
- (10) 8" pegboard hooks are included
- Fully assembled and ready for use
- Durable, gray, powder coat finish

Model	Overall Dim: WxDxH (In.)	Ship Wt. (Lbs.)
915-95	34-3/4 x 1 x 20-3/4	11

FOB CT



Ships UPS

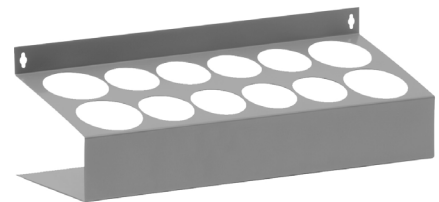
More New Products by Durham:



Gas Cylinder Racks



**PPE & Spill Control
Storage**



Aerosol Storage



Jobsite Storage