

DURHAM MFG®

Est. 1922



**6 Drawer
(Vertical)**



8 Drawer



9 Drawer



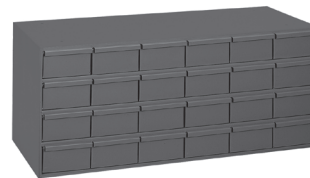
12 Drawer



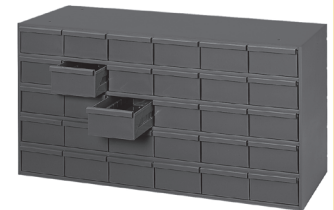
6 Drawer



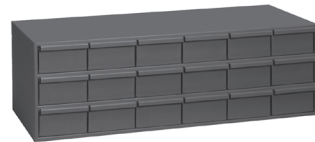
**18 Drawer
Vertical**



24 Drawer



30 Drawer



18 Drawer

Drawer Cabinets

- Prime cold rolled steel construction
- High density drawer cabinet; stores large quantities of small parts
- Drawers feature interlocking design for superior strength
- Each drawer includes 2 easy to label dividers, which are adjustable on 1" centers
- Drawers have full width handles and easy glide runners
- Cabinets can be stacked using mounting holes
- Optional base available for most units (see page 18)
- Durable gray powder coat finish
- Ships fully assembled

Model	Overall Dim: WxDxH (In.)	No. of Drawers	Drawer Dim: WxDxH (In.)	Carton	Ship Wt. (Lbs.)
Standard 2-3/4" high drawer					
001-95	11-3/4 x 11-11/16 x 10-7/8	6	4-7/8 x 11-1/4 x 2-3/4	1	18
002-95	33-13/16 x 11-11/16 x 3-15/16	6	4-7/8 x 11-1/4 x 2-3/4	1	19
003-95	22-13/16 x 11-11/16 x 7-3/8	8	4-7/8 x 11-1/4 x 2-3/4	1	22
004-95	17-1/4 x 11-11/16 x 10-7/8	9	4-7/8 x 11-1/4 x 2-3/4	1	24
013-95	33-13/16 x 11-11/16 x 7-3/8	12	4-7/8 x 11-1/4 x 2-3/4	1	32
005-95	33-13/16 x 11-11/16 x 10-13/16	18	4-7/8 x 11-1/4 x 2-3/4	1	45
006-95	17-1/4 x 11-11/16 x 21-1/4	18	4-7/8 x 11-1/4 x 2-3/4	1	46
007-95	33-13/16 x 11-11/16 x 14-5/16	24	4-7/8 x 11-1/4 x 2-3/4	1	59
014-95**	33-13/16 x 11-11/16 x 17-11/16	30	4-7/8 x 11-1/4 x 2-3/4	1	73
Jumbo 3-1/2" high drawer x 11-1/4" deep					
030-95	33-13/16 x 11-11/16 x 12-13/16	18	4-7/8 x 11-1/4 x 3-1/2	1	54
031-95**	33-13/16 x 11-11/16 x 16-15/16	24	4-7/8 x 11-1/4 x 3-1/2	1	70
034-95**	33-13/16 x 11-11/16 x 21-1/16	30	4-7/8 x 11-1/4 x 3-1/2	1	85
Jumbo 3-1/2" high drawer x 17" deep					
032-95**	33-13/16 x 17-5/32 x 12-13/16	18	4-7/8 x 17 x 3-1/2	1	70
033-95**	33-13/16 x 17-5/32 x 16-15/16	24	4-7/8 x 17 x 3-1/2	1	91
035-95**	33-13/16 x 17-5/32 x 21-1/16	30	4-7/8 x 17 x 3-1/2	1	112

FOB CT



Ships UPS

** units must ship by truck due to UPS ground size restrictions

DRAWER CABINET SYSTEM

(Fully assembled with base)



**Model
017-95**



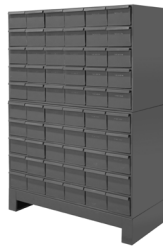
**Model
019-95**



**Model
022-95**



**Model
024-95**



**Model
025-95**



**Model
026-95**

Drawer Cabinet System (Fully assembled with base)

- Prime cold rolled steel construction
- High density drawer cabinet; easy to store large quantities of small parts
- Drawers feature interlocking design for superior strength
- Drawers have full width handles and easy glide runners
- Each drawer includes 2 dividers
- Dividers are movable on 1" centers and easy to label
- Vertical supports inside the cabinet provide added strength
- Fully welded base is included and raises unit 5-1/4" above the floor
- Ships fully assembled
- Durable gray powder coat finish

Model	Overall Dim: WxDxH (In.)	Drawers	Drawer Dim: WxDxH (In.)	Carton	Ship Wt. (Lbs.)
2-3/4" high drawers					
017-95	34 x 12-1/4 x 33-3/4	48	4-7/8 x 11-1/4 x 2-3/4	1	162
019-95	34 x 12-1/4 x 48	72	4-7/8 x 11-1/4 x 2-3/4	1	224
022-95	34 x 12-1/4 x 62-1/4	96	4-7/8 x 11-1/4 x 2-3/4	1	276
3-1/2" high drawers					
024-95	34 x 12-1/4 x 26-1/4	30	4-7/8 x 11-1/4 x 3-1/2	1	136
027-95	34 x 17-3/4 x 26-1/4	30	4-7/8 x 17 x 3-1/2	1	153
025-95	34 x 12-1/4 x 47-5/16	60	4-7/8 x 11-1/4 x 3-1/2	1	214
028-95	34 x 17-3/4 x 47-5/16	60	4-7/8 x 17 x 3-1/2	1	268
026-95	34 x 12-1/4 x 68-3/8	90	4-7/8 x 11-1/4 x 3-1/2	1	291
029-95	34 x 17-3/4 x 68-3/8	90	4-7/8 x 17 x 3-1/2	1	332

FOB CT